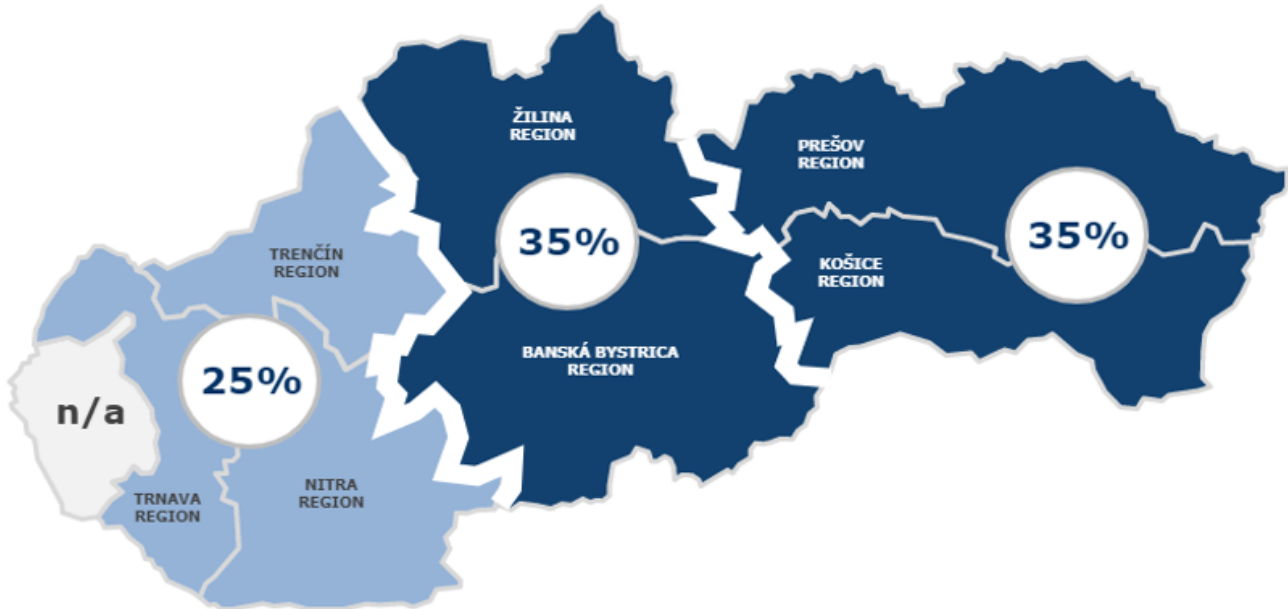


Regional investment aid

The linkage to a specific region is one of the basic features of investment aid and the conditions for granting it are the same for both foreign and domestic entrepreneurs.



*Regional maximum aid intensity as a % of the eligible costs.

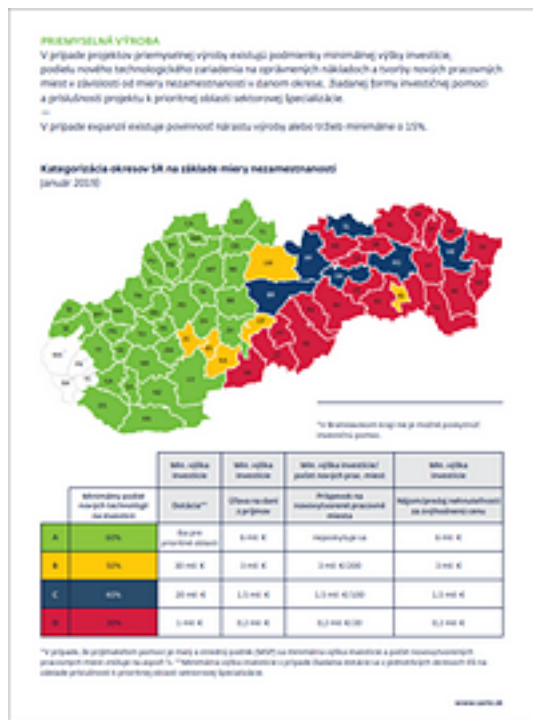
The relevant legislation divides projects that may be supported by investment aid into the following categories:

- industrial production
- technology centers
- combined project of industrial production and technology center
- shared services centers

Each of the abovementioned categories has its own conditions that must be met in order to apply for the investment aid.

Regional investment aid

Published on SARIO, Slovak Investment and Trade Development Agency (<https://www.sario.sk>)



[Investment Aid 02/2020](#) [1]

Learn more about the regional investment aid:

- [Overview of conditions for regional investment aid](#) [1]
- [Act No. 57/2018 Coll. on Investment Aid](#) [2]
- [Government Regulation No. 195/2018 Coll. On Investment Aid – only in Slovak language](#) [3]

In case of any questions, please do not hesitate to contact us at invest@sario.sk [4].

Source URL: <https://www.sario.sk/en/invest-slovakia/support-investors/regional-investment-aid>

Links

- [1] <https://www.sario.sk/sites/default/files/data/sario-investment-aid-2020-02-24-ENG.pdf>
[2] <https://www.sario.sk/sites/default/files/content/files/EN%20Law%20572018.pdf>
[3] <https://www.sario.sk/sites/default/files/content/files/sario-nariadenie-vlady.pdf>
[4] <mailto:invest@sario.sk>