

**Please take into account these points and add them in the PI:**

**1. Fittings 100% real seamless made from seamless pipe.**

- DIN fittings must be produced from EN10216-1 Pipe.
- Standard fittings from pipe EN 10253-1 (DIN 2605) SEAMLESS.

**2. Fittings not real (FAKE).**

- Manufactured without the inner bead showing (lapping).

**3. Finish:**

- DIN: some light oil and sandblasting (fine grained)\*. No varnish.
- STD: black coating.
- SCH: any coating and oil, but not rusty and yes sandblasting.

\* sandblasting (fine grained) to polish perfectly it is very important (see pictures in the pages below).

**3. Grade:**

- Rst. 37.2 or similar.

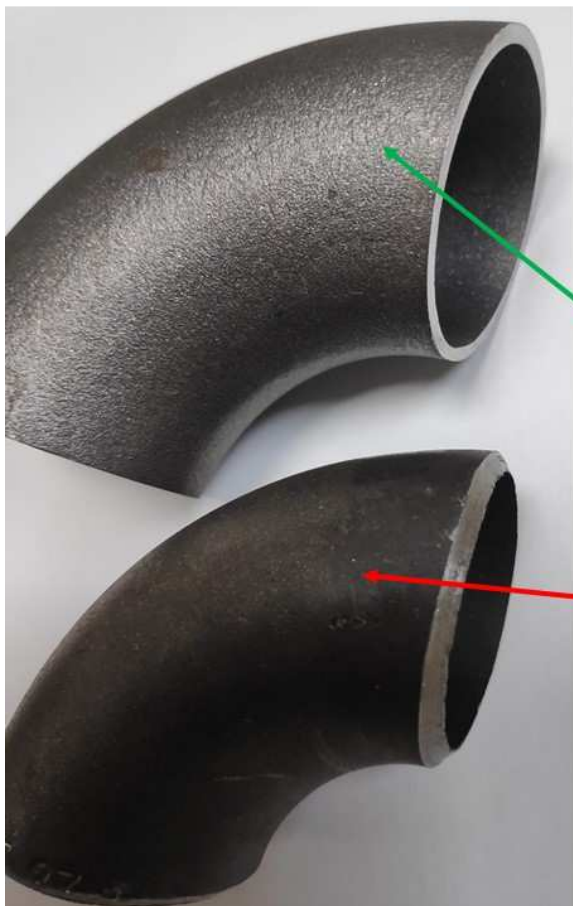
**4. Nipples and sockets:**

- Must be produced according the drawings.

**5. Thickness:**

- Take into account the indicated thickness of the fittings according to the standard.

**FINISH:**

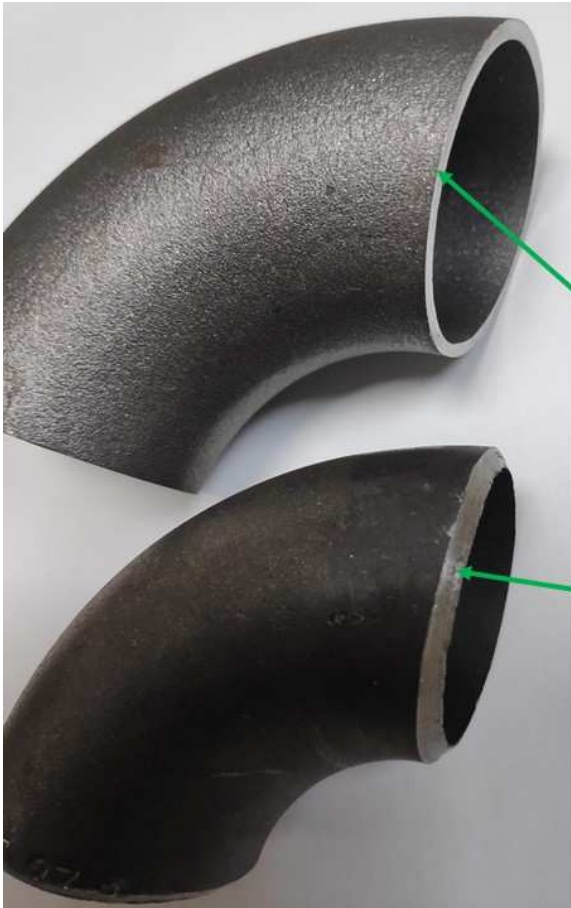


**FINISH**

This is the **right finish** (fine grained).  
Double sandblasting. The finished must be very well polished.

This is the **wrong finish**. Not accepted.  
(granulated or wrinkled).

**EDGE BEVELLING:**



**EDGE BEVELLING**

This is the **right beveled for (without bevel, straight):**

- Elbow up 2" (from the smallest to 2").

This is the **right beveled for (with bevel):**

- Elbow from 2 ½" (from 2 ½" to the largest).

**ANGLE:**



**ANGLE**

The 90° angle of the elbow must be perfect. We do not accept the example in the photo.